

3.3 Management of Environmental Sustainability



3.3.1 Environmental Policy and Guidelines

The Company’s operational procedures and impacts on environment are as shown:

PROCESS FLOW CHART

INPUT	PROCESS	OUTPUT
Fuel truck, crane, mother coil	Receiving	Fuel dripping from truck. Wheel dust, truck exhaust fumes, noise
Crane, mother coil, electricity	Casing	Scrap, paper/plastic scrap, steel strap
Electricity, mother coil, machinery, anti-rust oil	Cutting/Slitting	Engine oil sludge, scrap, steel products, noise, oil mist, machine wiping cloth
Electricity, packing paper, wooden/steel pallet, anti-rust oil, steel/plastic strap,	Packing	Wood scrap, oil mist, paper scrap, paper spool
Crane, forklift products, fuel	Storage	Falling steel, fuel usage, oil dripping, wheel dust, exhaust fumes
Truck, fuel	Delivery	Exhaust fumes, wheel dust, oil dripping/leaking

Environmental Management

“SSSC for environmental conservation and rehabilitation” innovation known as SSSC as follows:

- S. Stop Global Warming
- S. Save Green Save Earth
- S. Save Green World
- C. Corporate Social Responsibilities

Environmental Management Policy

As part of the society and community, and to give back to society and community, the Company is fully committed to continuously improve Environmental Management System (ISO 14001:2015). The Company cooperates with environmental concerned organizations running campaign to reduce global warming, raise forest conservation awareness, save the world, create green world, improve quality of life and environment. These have been operated according to the environmental policy which was reviewed and revised on 26 May 2025.

1. Performs in appropriation with context, goal, characteristic, size, and impact on environment stemming from products and services of the Company
2. Commits to protect environment, prevent and control pollution resulted from the Company operation.
3. Commits to comply with obligation and terms concerning environmental management.
4. Strives to promote employee participation in pollution reduction on reduce greenhouse gas emissions.
5. Develops and improves production recognizing impact on environment at every procedure.
6. Continuously conducts environmental evaluation and review against the set objectives and targets.

The Company has applied, to its business operation, the Sufficiency Economy for Industrial Sector Guidelines (TIS 9999 volume 1-2556 B.E.) for the balance, stability, sustainability and happiness. In 2025, the Company performed environmental maintenance following the Sufficiency Economy for Industrial Sector Guidelines as follows:

1. Maximizing resources from acquiring to using of raw materials, waste management, and impacts on next generations.
2. Being aware of and identifying the impacts stemming from corporate operation on environment while seeking alternatives to best eliminate and reduce the impacts.
3. Gearing toward development of environmentally friendly products and production process, avoiding any production without pollution management or protection.
4. Using energy and renewable energy for corporate operation effectively and efficiently.
5. Instituting guidelines for systematic water management covering management, storage, control, treatment, and drainage without damaging natural water source while maintaining the benefits of the community and society where the Company operates.
6. Participating in the conservation, development and rehabilitation of soil, water and forest regarded as foundation of life of the community and society.

Through regular communication and training, the Company instills knowledge and understanding in employees concerning the essence of environmental conservation and rehabilitation both in the workplace and household. In connection to this, policy guidelines have been drawn for continuous and effective implementation in alignment with ISO14001. Accordingly, the Company has been certified ISO14001 since 2004. Particularly, in 2016, the Company was certified the new version of ISO14001:2015.

Energy Management

The Company attaches an importance on efficient energy usage in production process, the Company, therefore, promotes continuous participation among employees on sustainable energy management. The key objective is to promote employees' awareness of effective and efficient use of energy as well as to constantly and sustainably lower energy costs. The Company improves its energy management system by:

- Appointing the energy management working group comprising representatives from various units within the organization;
- Preliminary review of energy management;
- Defining energy conservation policy;
- Potential assessment on energy conservation;
- Setting targets and action plan for energy conservation, training plan and activities to promote energy conservation;
- Implementing energy conservation plan, reviewing and analyzing operation against the set targets and plan;
- Monitoring and assessing energy management;
- Reviewing, analyzing and revising energy management plan and targets.

In 2025, the Company strived for international standard under the program on Development of the Thai Energy Management toward International Energy Management Standards ISO 50001. Accordingly, the Company has been certified ISO 50001 resulted from purchasing of electrical equipment which was reviewed and revised and effective on 26 May 2025

1. The Company shall determine energy conservation as part of its operation through development for suitable energy management system in line with related laws and regulations.
2. The annual energy conservation plan and targets shall be formulated and made known to every employee for common understanding and actions.

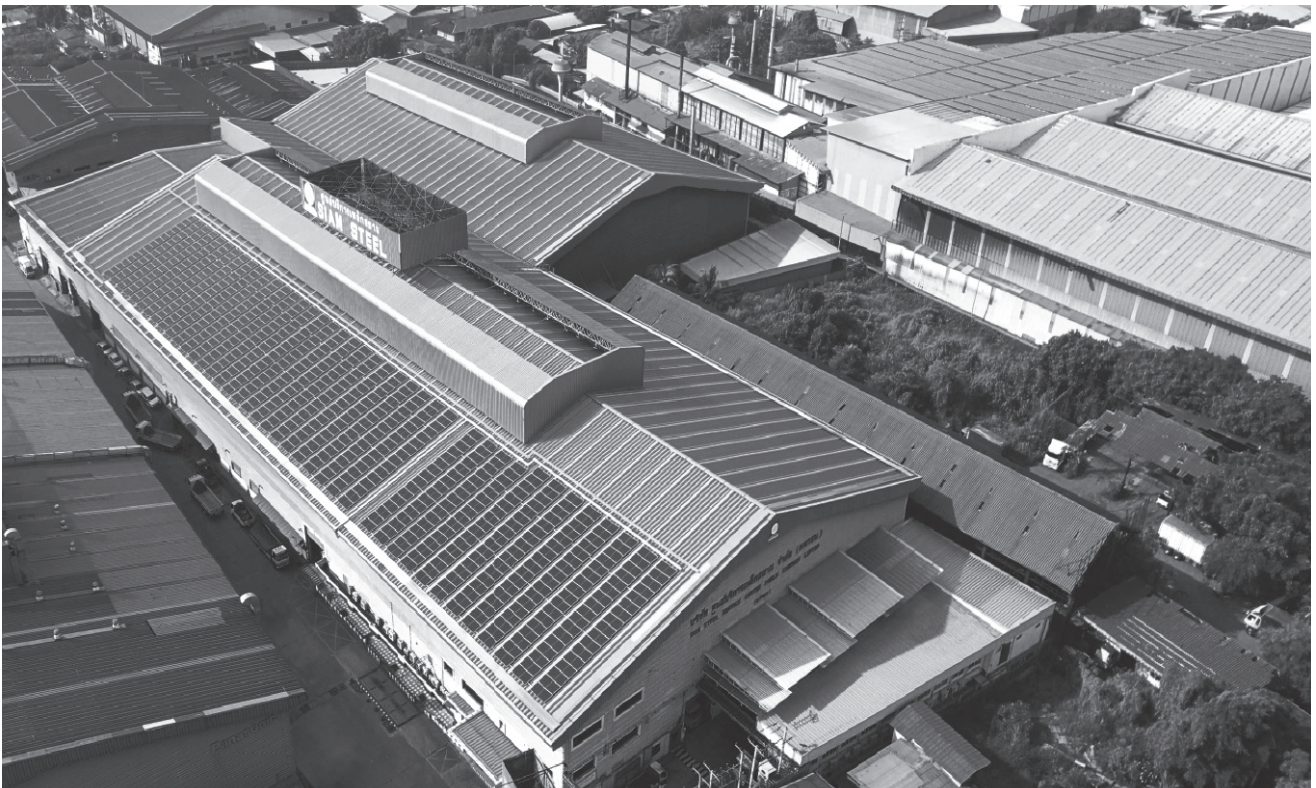
3. The Company shall support the purchasing of electrical equipment and services designed for energy capacity improvement.
4. The Company shall continuously improve technology and energy consumption for effective and proper use in the business.
5. The Company shall regard energy conservation as duty and obligation of executives and employees to cooperate and comply with the stipulated measures.
6. The Company shall promote and provide resources as needed including personnel, budget, work hours, training, awareness instillation, idea sharing of employees for efficient development of energy related work.
7. The energy conservation plan and targets are revised every year by executives and the Working Group.

Sustainable Use of Resources

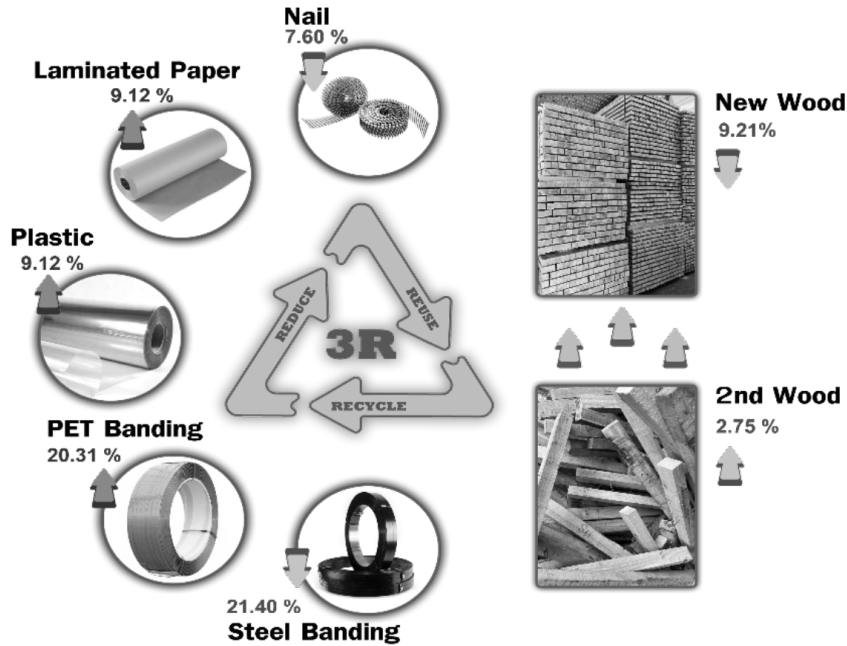
Apart from implementing Industrial Standard Following Sufficiency Economy in Industrial Sector TIS 9999, the Company adopts the “3Rs” Principles consisting of R1- Reduce, R2 - Reuse, R3 - Recycle. The adopted 3Rs is implemented to continuously develop and improve productivity focusing on effective use of raw material by reducing or reusing waste to remain at the least amount. The produced waste is properly managed in accordance with the provision of law including waste storage, reuse, and treatment.

The company has also implemented the “Knock Down Steel Pallet to Replace Wooden Pallets” project continuously from 2016 to 2025 by supporting and encouraging customers to change their use of steel pallets instead of wooden pallets to reduce the use of wood resources. **The target is to use steel pallets as 70% of all pallets. In 2025**, we have received cooperation from 98 customers, accounting for 25.32% of all pallets used (25.59% in 2024).

Indicator, measure, record, and report of electrical energy, gasoline, and other resources consumption are defined for the preparation of environmental quality report to be presented to the committee members and working groups concerned for further environmental planning.



Summary of 2025 Sustainable Use of Resources Applying 3Rs



Year	Nail	Laminated Paper	Plastic	PET Banding	Steel Banding	New Wood	2nd Wood
2568	612,240.00	3,871,664.04	3,871,664.04	1,218,700.00	6,397,901.50	15,973,400.00	12,100,004.00
2567	662,570.00	3,548,127.58	3,548,127.58	1,013,000.00	8,140,339.50	17,593,350.00	11,776,582.00

The company has set a target for the use of second-hand wood at 70% of the total wood consumption. In 2024, the proportion of second-hand wood used was 40.10% of the total wood consumption, and this is projected to reach 43.10% in 2025.

3.3.2 Environmental Performances

The Company stipulates that there shall be an indication, measurement, record, and report of electricity consumption, fuel, and other significant resources. Accordingly, the environmental quality measurement report is prepared and submitted to the committee and working group in charge of environmental issues for planning.

1. Water Management

Effective Water Usage

Measures to increase effectiveness of water and wastewater management

The Company regulates the control of electricity and water uses as well as water-saving campaign as follows:

- (1) Prompt fixing of broken faucets;
- (2) Modifying water-saving devices
- (3) Water-saving campaign
- (4) Reusing treated water

Requirement 1

Prepares water inventory illustrating amount of water used as well as amount of wastewater, water balance.

Performance

Water inventory has been prepared illustrating water activities and amount used as well as wastewater, water balance, even through Company's plant does not use water in the production process. As such, water use only in toilet and kitchen.

Requirement 2

Defines objectives and targets, formulates action plan, implements and enhances water and wastewater measures.

Performance

Performance reaches target by 100% as shown.

Out put	2023 M ³ /day	2024 M ³ /day	2025 M ³ /day
% of water reuse	40 (100%)	40 (100%)	40 (100%)

Requirement 3

Effective water and wastewater management according to measures provided.

Performance

Assessment results of water use intensity and wastewater intensity has shown the continuous improvement as water consumption/person/year reduced by 1% yearly during the past 3 years.

Year	Water use intensity (M ³ /year)	Increase (Decrease) By %
2023	37.9	12.13
2024	41.7	10.03
2025	37.19	10.81

2. Energy Management

Implementation of effective use of resources measures to reduce energy consumption and consumption of other resources by determining indicators of good practice against other sources as results shown:

Year	Quantity (kilowatt - hr.)	Cost (baht)	Amount to KgCO ₂ e
2023	3,579,976.40	17,296,156.34	1,789,630
2024	3,461,515.56	15,086,479.11	1,730,410
2025	3,256,230.15	14,666,226.81	1,627,789

Environmental protection and rehabilitation

The Company is well aware of the global warming and climate change impacts. The Company's commitment has been extended to integrating environment friendly into its operational plan for employees to be aware of management concerning environment, occupational health and safety, effective use of energy. Work process is continuously improved for pollution prevention, reduce impact on environment as well as conservation of natural resources.

Environmental protection and rehabilitation practices

- On a yearly basis, operates reforestation caravan to fight against drug, and reduce global warming.
- Conducts training on energy conservation for community and school for them to be able to apply in their actual situations.
- Continuously takes care of employee good health and work safety from which the Company had been awarded at the National level in terms of occupational health, safety and working environment for 20 consecutive years (2006 - 2025), and being certified ISO14001 and ISO45001.

3. Waste and Pollution Management

Protection and reduction of pollution

- Checking and recording of important environmental issues, reporting results of reduction of pollution and waste to Environment Committee.
- Installing wastewater treatment and control system whereby wastewater is treated before discharged even though the Company's factory does not use water in the manufacturing process.
- Installing precipitator for air pollution control and release, providing tire and wheel cleaning pit for vehicle before entering the factory.
- Facilitating request for permission to discharge waste or used materials from the factory as required by law.
- Developing and promoting the use of environmentally friendly products and services. Subcontractor's transports and equipment are required regular checking before operation at least once a day using the form as specified by the Company. On a regular basis and before driving, random sampling for body checkup of the drivers including drug and alcohol test.

Impact on Environment

The Company manages waste from production process to avoid any impact on internal and external work environment.

Requirement 1

Prepares waste inventory, waste profile, and waste flow diagram.

Performance

Factory waste profile is in place, transportation waste flow diagram sent to the Department of Industrial Works.

Requirement 2

Sets objectives and targets, formulates action plan, and implement according to the waste management measures. Performance in this regard achieves 60% of the set target.

Performance

Implemented the 3Rs e.g., recycle used wooden pallet which reduced the use of new wooden pallet.

In 2025, the proportion of second-hand wood used was 43.10%

Waste	Management
Scrape from steel cutting	Sells to licensed producers for recycling into other products
Wood scrapes from making wooden crate (crate used to transport or store steel)	Sells to licensed producers for recycling into other products
Expired engine oil and hydraulic oil	Sells to licensed producers for recycling into other products
Oil and chemical contaminated waste	Send to licensed personnel for disposal
Dust particles from making wooden crates	Uses vacuum to store for later use as oil absorber

4. Reduction of Greenhouse Gas Emission

In 2025, the Company conducted Carbon Footprint for Organization assessment for the preparation of management directives concerning effective greenhouse gas emission under the operation of the greenhouse gas management policy, which has been reviewed and announced on May 28, 2025.

The Company stipulates policy on greenhouse gas emission reduction as follows

1. The Company shall formulate the greenhouse gas emission reduction plan and measures and made known to all employees for according cooperation;
2. It is an obligation of all executives and employees to take the greenhouse gas emission reduction as their responsibilities and compliance to the specified measures. They shall also monitor and report to the Greenhouse Gas Emission Reduction Committee;
3. The Company shall promote and support as necessary and appropriate, the human resources, training budget, employees participation concerning idea for development of greenhouse gas emission reduction;
4. The Company shall extend environmentally friendly idea to suppliers for manufacturing process application, and to define operational guidelines for non-renewable energy consumption reduction in the supply chain;
5. Executives and the Greenhouse Gas Emission Reduction Committee shall review and evaluate yearly, the greenhouse gas emission reduction policy, plan, and targets.

Performance	2023	2024	2025
1. Direct greenhouse gas emission: Scope 1 (ton CO ₂ e) combustion of fossil fuels (LPG, Diesel)	827.59	927.90	982.27
2. Indirect greenhouse gas emission: Scope 2 (ton CO ₂ e) electricity consumption not include solar cell	1,789.63	1,714.78	1,627.79

As a consequence of consistently raising awareness of its employees on environmental conservation under the “SSSC for environmental conservation and rehabilitation,” the Company has gained full participation from all employees implementing environmental friendly activities as corporate culture practice. As such, the Company was accredited Green Industry Level 4: Green Culture, from the Ministry of Industry since 2019-2025.

Eco Factory: Practices for Stable Business, Livable Community and Sustainable Environment

Under the corporate strategy (Sustainable Development:-SD) for the development of the organization towards sustainability, it encompasses the five dimensions of an eco-industrial city framework: physical, economic, social, environmental, and management throughout 2021 and continuing into 2025, the company has been committed to conducting business that is environmentally friendly for sustainable development by focusing on the development and improvement of the production process and environmental management on the basis of social responsibility both inside and outside the organization throughout the supply chain continuously and sustainably, including community development and promotion of the community's economy, resulting in the company being certified as an Eco-Factory by the Federation of Thai Industries and the Industrial Estate Authority of Thailand under the criteria for the assessment of Eco Efficiency and social indicators (Impact Evaluation), which consist of 14 issues as follows:

Issue 1 Raw Material Management

Implementing measures, improving or changing processes or machinery and equipment to increase the efficiency of raw material use in the production and service processes.

Issue 2 Energy Management

Implementing energy conservation measures, such as improving or changing the production process or machinery and equipment to reduce energy consumption and increase production efficiency.

Issue 3 Water and Wastewater Management

Efficient use of water (Water Efficiency) to reduce wastewater and discharge of wastewater outside the factory.

Issue 4 Air Pollution Management

Implementing measures, improving or changing processes or machinery and equipment to reduce the quantity of air pollution that affects the environment.

Issue 5 Greenhouse Gas Management

Implementing measures to improve or change production processes or machinery and equipment to reduce the quantity of greenhouse gas emissions and increase efficiency in production and service processes.

Issue 6 Waste Management

Reduce waste to landfill and reuse waste. Waste includes general waste and hazardous waste. Reusing waste or unused materials includes using them in the production process or sending them as raw materials for production in other factories.

Issue 7 Chemical and Hazardous Substance Management

Reduce leakage of chemicals and hazardous substances and prevent leakage or accidents that affect employees, communities or the external environment.

Issue 8 Health and Safety Management at Work

Employees are safe and healthy at work, resulting from good work conditions and work environments, such as air quality, light, noise and heat in the work area etc. There is occupational health care for employees and there is an analysis and prevention of risks from hazards resulting from business operations.

Issue 9 Transportation and Logistics

Reducing the use of related resources, increasing efficiency, and applying information technology and automation to transportation and logistics systems to reduce costs, increase efficiency and improve safety in transportation and logistics.

Issue 10 Green Supply Chain Management

To promote sustainable production and consumption policies, whereby Green Procurement means the procurement of goods and services that will have the least impact on the environment compared to goods and services of the same type, considering the entire life cycle at every stage. Environmental labels include labels of types 1, 2, and 3.

Issue 11 Green Landscape Management

Increasing green areas both inside and outside the factory and managing the layout and areas of the green landscape.

Issue 12 Biodiversity

Reducing the rate of loss of natural habitats and the fragmentation of natural habitats of biological resources.

Issue 13 Income Distribution for Communities

Creating new careers that generate sustainable income for communities, so that people in the community have careers and income including mutual support between the factory and the community. In this regard, creating new, stable and sustainable income.

Issue 14 Coexistence with Surrounding Communities

Communicate and disseminate information on safety and environmental management and provide opportunities for the community to participate in monitoring the quality of the environment. There are activities to promote the quality of life of the community, including the factory seriously implementing the principles of the social responsibility management system (ISO 26000) or CSR DIW with tangible results. The scope of social responsibility has 7 main topics: 1) good governance, 2) human rights, 3) labor practices, 4) environment, 5) fair operations practices 6) consumer practices and 7) community participation and development.

Green Industrial Factory Level 4: Green Culture

As a result of operating under the 14 performance evaluation criteria covering the 5 dimensions of an eco-industrial park-physical, economic, social, environmental, and management, the company has achieved efficient resource utilization. This includes minimizing waste generation, efficient use of raw materials and energy, standardized environmental management system, reliable business operations, and mutual benefit with stakeholders and the surrounding community. In addition to being certified as an Eco Factory, the company has also received Green Industrial Factory Level 4: Green Culture certification from the Ministry of Industry. This recognition stems from the collective effort and commitment of everyone within the organization to conduct environmentally friendly operations in all aspects, making it an integral part of the corporate culture.

The company has created an organizational culture that complies with all criteria of the Green Industry Level 4 and promotes, creates, and builds relationships in environmental activities with stakeholders covering the supply chain, community, and consumers to jointly develop the network to expand “the Green Industry Level 5 Green Network” according to the plan set for 2026-2027.